

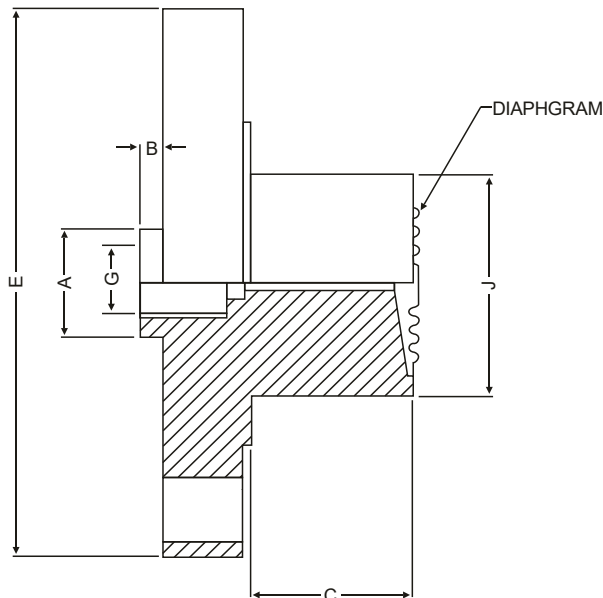
- 焊接隔膜
- 法蘭連接
- 適用於泥漿. 黏性流體
- 此隔膜密封可安裝於壓力錶. 開關. 傳送器等, 為阻隔具有腐蝕性. 黏性與自然沉澱的傳感元件, 以避免阻塞和固化



規格特性

- ◆範圍：1kg/cm<sup>2</sup>~60kg/cm<sup>2</sup>
- ◆工作溫度：-40°C~200°C 或根據每次填充液
- ◆本體牙口：3/8" BSP(F)
- ◆接續牙口：Flange (as per DIN/ BS/ ANSI/ JIS)  
Finish 125~250AARN  
40NB (1 1/2") to 80NB (3") (as required)
- ◆隔膜材質：AISI316L SS
- ◆本體材質：AISI316 SS
- ◆延伸長度：標準50mm (其它長度可訂製)
- ◆填充油：矽油-DC200

尺寸圖



Notes: • Drawings are not to scale. • All Dimensions are in mm.

A	B	~C	E	G	J
30	8	*	**	3/8" BSP(F)	***

\*AS REQUIRED BY CUSTOMER

\*\* as per standard flange table ANSI, DIN, BS, JIS Etc.

\*\*\* DIAPHRAGM SUITABLE FOR FLANGE RF AND RANGE

法蘭連接碼

DIN 2527

DN	PN	CODE
40	6	A41
	10	A42
	16	A43
	25	A44
	40	A45
	64	A46
	100	A47
	160	A48
	250	A49
	400	A50
50	6	A51
	10	A52
	16	A53
	25	A54
	40	A55
	64	A56
	100	A57
	160	A58
	250	A59
	400	A60

DN	PN	CODE
65	6	A61
	10	A62
	16	A63
	25	A64
	40	A65
	64	A66
	100	A67
	160	A68
	250	A69
	400	A70
80	6	A71
	10	A72
	16	A73
	25	A74
	40	A75
	64	A76
	100	A77
	160	A78
	250	A79
	400	A80

BS - 10

NOMINAL SIZE	TABLE	CODE
1 1/2"	D	C09
	E	C10
	F	C11
	H	C12
	J	C13
	K	C14
	D	C15
2"	E	C16
	F	C17
	H	C18
	J	C19
	K	C20

NOMINAL SIZE	TABLE	CODE
2 1/2"	D	C21
	E	C22
	F	C23
	H	C24
	J	C25
	K	C26
3"	D	C27
	E	C28
	F	C29
	H	C30
	J	C31
	K	C32

## 選用型號規格

### BASIC MODEL

BBY

### OPTIONS

FOR NON STANDARD PRODUCTS/OPTIONAL, PLEASE CONTACT FACTORY FOR DELIVERY AND MINIMUM QUANTITY OF ORDER.

### INSTRUMENT CONNECTION 本體牙口

Q2

Q2 1/4" BSP	Q3 1/4" NPT	Q1 1/2" BSP
Q6 3/8" BS(F)	Q5 3/8" NPT	Q4 1/2" NPT

### DIAPHRAGM MATERIAL 隔膜材質

AH1

AH1 AISI 316SS	AH2 SILVER
AH3 HASTELLOY 'C'	AH4 TANTALUM
AH5 MONEL	AH6 TITANIUM
AH7 NICKEL	

### PROCESS CONNECTION 接續牙口

B54

AS PER DIN/ BS /ANSI /JIS (SELECT CODE FROM TABLE)

### BODY 本體

AF4

AF4 AISI SS316L	AF5 HASTELLOY 'G'	AF6 TITANIUM
AF3 AISI SS316	AF7 MONEL	

### FILLING FLUIDS 填充液

T9

T9 SILICON DC200-10CS [-40 TO 205°C / -40 TO 401°F]  
T2 SILICON DC 704 [0 TO 315°C / 32 TO 599°F]  
T4 SILICON DC 710 [5 TO 345°C / 41 TO 653°F]  
T6 SYL THERM 800 [-45 TO 205°C / -49 TO 401°F]  
T8 SYL THERM XLT [-75 TO 150°C / -102 TO 302°F]  
T1 FLUROLUBE 4.2 [-45 TO 175°C / -49 TO 374°F]  
T3 FLUROLUBE 6.3 [-40 TO 235°C / -40 TO 455°F]  
T5 FLUROLUBE FS5 [-40 TO 150°C / -40 TO 302°F]  
T7 FOOD GRADE OIL [-20 TO 140°C / -4 TO 284°F]  
T10 HALOCARBON OIL

### PROTECTION ON WETTED PARTS

U3

U3 PTFE PROTECTION FOR DIAPHRAGM

### TYPE

G1

G1 WITHOUT CAPILLARY G2 WITH CAPILLARY

### CAPILLARY

H1

H1 AISI 304SS H2 AISI 316SS

### CAPILLARY COVERED WITH ARMOUR

I1

I1 AISI 304SS I2 AISI 316SS I3 PVC

### CAPILLARY LENGTH(Max up to 6Mtrs.)

3Mtr.

IN METERS (e.g. 1.5 = 1.5 METERS 2.0 = METERS)

### OTHER OPTIONS

K3

K3 HELIUM LEAK TEST K4 DRY SEAL ONLY WITHOUT INSTRUMENT

Ordering Example:

**BBY-Q2-AH1-B54-AF4-T9-U3-G1-H1-I1-3Mtr.-K3**

Note : ● Due to continuous improvement, the specification may vary from time to time.