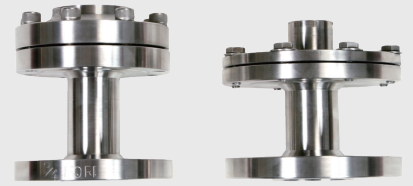


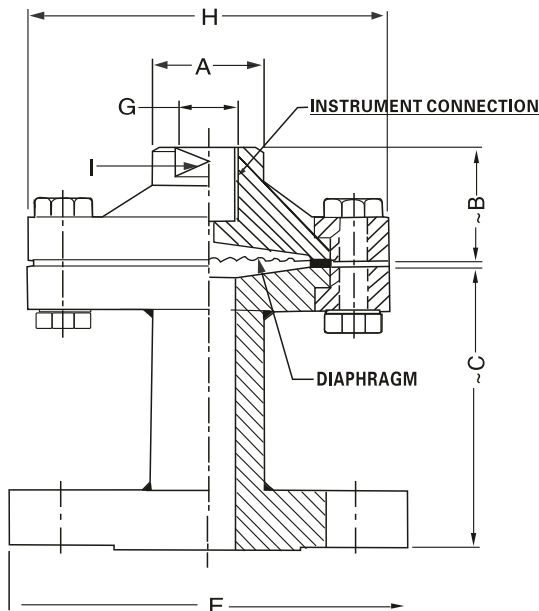
- 可與較小的法蘭連接
- 此隔膜密封可安裝於壓力錶. 開關. 傳送器等, 為阻隔具有腐蝕性.黏性與自然沉澱的傳感元件, 以避免阻塞和固化



規格特性

- ◆ 範圍： $-1\text{kg/cm}^2 \sim 21\text{kg/cm}^2$
- ◆ 工作溫度： $-40^\circ\text{C} \sim 200^\circ\text{C}$ 或根據每次填充液
 $-40^\circ\text{C} \sim 345^\circ\text{C}$ without PTFE lined
- ◆ 本體牙口： 3/8" BSP (F)
- ◆ 接續牙口： Flang (as per DIN/ BS/ ANSI/ JIS) Finish 125~250AARH
- ◆ 隔膜材質： AISI 316L SS
- ◆ 上層閥材質： AISI 304 SS
- ◆ 一節(底座閥)材質: AISI316 SS Flange (as per DIN/ BS/ ANSI/ JIS)
- ◆ 墊片活動環(抗拉翼緣)材質: 碳鋼鍍鎳PTFE(高達 200°C)/
金屬密封 (高達 350°C 鋼鍍鉻粉末塗層)
- ◆ 填充液： 矽油-DC 200 up to $-40 \sim 200^\circ\text{C}$

尺寸圖



Ranges	A	~B	~C	E	H	G	I
-1 to 2.5 kg/cm^2	30	31	75	*	90	3/8"BSP(F)	A/F 25
4 to 400kg/cm^2	30	31	75	*	60	3/8"BSP(F)	A/F 25

*-as per standard flange table ANSI,DIN,BS,JIS ETC.,

Notes: · Drawings are not to scale. · All Dimensions are in mm.

選用型號規格

BASIC MODEL

OPTIONS

FOR NON STANDARD PRODUCTS/OPTIONAL ITEMS, PLEASE CONTACT FACTORY FOR DELIVERY AND MINIMUM QUANTITY OF ORDER.

TOP CHAMBER 上層閥

L1 AISI 316L SS L2 AISI 316 SS
L3 AISI 304 SS L4 CARBON STEEL

DIAPHRAGM 隔膜材質

M8 PTFE M2 NICKEL M3 TITANIUM
M4 HASTELLOY'C M5 SILVER M1 AISI 316L SS
M6 MONEL' M7 TANTALUM

GASKET 墊片

N3 METAL N4 PTFE

TENSION FLANGE & NUT -BOLTS 抗拉翼緣與螺栓螺母

AC1 AISI 304SS AC2 NICKEL PLATED MILD STEEL
AC3 AISI 316 SS

FLUSHING RING 活動環

S1 FLUSHING RING WITH 1/2"NPT PLUG (AISI 304 SS) S2 FLUSHING RING WITH 1/4"NPT PLUG(AIS 304 SS)
S3 FLUSHING RING WITH 1/2" NPT PLUG (AISI 316SS) S4 FLUSHING RING WITH 1/4"NPT plug (AISI 316 SS)Std.

BOTTOM CHAMBER(I SECTION) 下層閥

P2 AISI 304 SS P3 CARBON STEEL P4 PVC P1 AISI 316 SS
P5 AISI 3161 SS P6 POLYPROPELENE P7 PVDF

INSTRUMENT CONNECTION 本體牙口

Q1 1/2"BSP(F) Q5 3/8"BSP(F)
Q2 1/4"NPT(F) Q7 1/2"NPT(F)
Q3 1/4"BSP(F) Q6 3/8"NPT(F)

PROCESS CONNECTION 接續牙口

AS PER DIN /BS/ANSI/JIS(SELECT CODE FROM TABLE)

T1 FLUROLUBE 4.2[-45 TO 175°C/-49 TO374 ° F] T2 SILICON DC 704 [0 TO 315°C/-32 TO599 ° F]
T3 FLUROLUBE 6.3[-40 TO 235°C/-40 TO455 ° F] T4 SILICON DC 710 [5TO 345°C/-41 TO653 ° F]
T5 FLUROLUBE FS5[-40 TO 150°C/-40 TO302 ° F] T6 SYLTHERM 800 [-45 TO205°C/-49 TO401° F]
T7 FOOD GRADE OIL[-20 TO 140°C/-4 TO284 ° F] T8 SYLTHERM XLT [-75 TO150°C/-102TO302° F]
T9 SILICON DC200-10CS[-40 TO 205°C/-40 TO401 ° F] T10 HALOCARBON OIL

PROTECTION ON WETTED PARTS

U1 PTFE LINING ON BOTTOM CHAMBER(ISECTION)-3mm THICK U2 PTFE PROTECTION FOR DIAPHRAGM
U3 PTFE COATING ON DIAPHRAGM

TYPE

G1 WITHOUT CAPILLARY G2 WITH CAPILLARY

CAPILLARY

H1 AISI 304 SS H2 WITH CAPILLARY

CAPILLARY COVERED WITH ARMOUR

I1 AISI 304 SS I2 AISI 316 SS I3 PVC

CAPILLARY LENGTH(Max up to 6Mtrs.)

IN METERS (e.g. 1.5)=1.5METERS 2.0=2METERS)

OTHER OPTIONS

K3 HELIUM LEAK TEST K4 DRY SEAL ONLY WITHOUT INSTRUMENT

Ordering Example:

BBV-L1-M8-N3-AC1-S1-P2-Q1-B11-T1-U1-G1-H1-I1-3Mtr.-K3

Note: ● Due to continuous improvement,the specification may vary from time to time.

BBV

L1

M8

N3

AC1

S1

P2

Q1

B11

T1

U1

G1

H1

I1

3Mtr.

K3