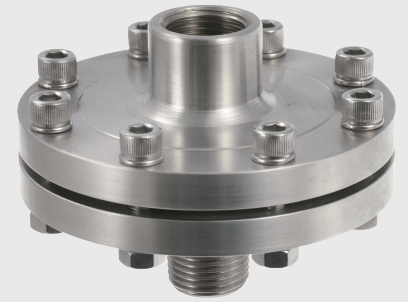


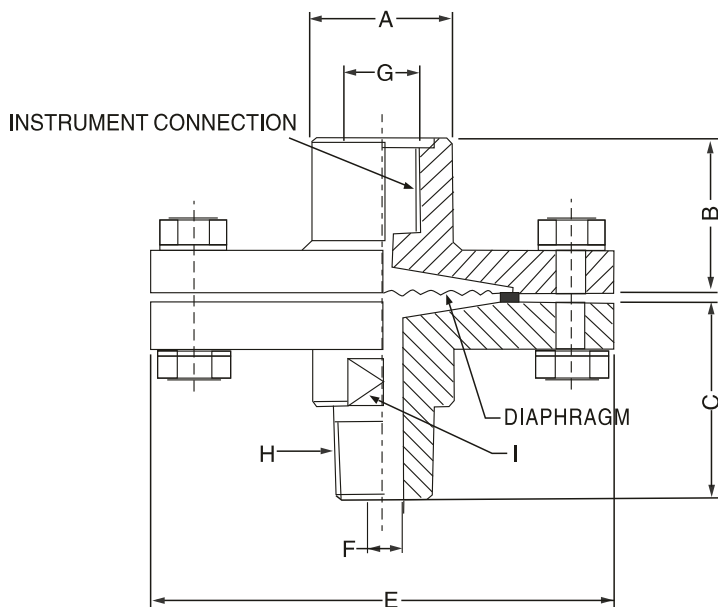
- 兩件式結構
- 隔膜焊在上層閥上
- 全不銹鋼結構, 堅固耐用
- 此隔膜密封可安裝於壓力錶. 開關. 傳送器等, 為阻隔具有腐蝕性. 黏性與自然沉澱的傳感元件, 以避免阻塞和固化



規格特性

- ◆ 範圍 : $-1\text{kg/cm}^2 \sim 70\text{kg/cm}^2$
- ◆ 工作溫度 : $-40^\circ\text{C} \sim 200^\circ\text{C}$ 或根據每次填充液
- ◆ 本體牙口 : 3/8" BSP (F)
- ◆ 接續牙口 : 1/2" NPT (M)
- ◆ 隔膜材質 : AISI 316L SS
- ◆ 本體材質 : AISI 316 SS (Forged)
- ◆ 螺栓/核心 : AISI 304 SS
- ◆ 墊片 : PTFE(最高 200°C) / 金屬密封(最高 350°C)
- ◆ 填充液 : 矽油-DC 200

尺寸圖



A	~ B	~ C	E	F	G	H	I
30	25	47	60~110	Φ 8	3/8" BSP(F)	*	A/F 25

*As Per customer Requirement.

Notes: • Drawings are not to scale. • All Dimensions are in mm.

選用型號規格

BASIC MODEL

OPTIONS

FOR NON STANDARD PRODUCTS/OPTIONAL ITEMS, PLEASE CONTACT FACTORY FOR DELIVERY AND MINIMUM QUANTITY OF ORDER.

TOP CHAMBER 本體材質

AISI 316L SS

DIAPHRAGM 隔膜材質

M1 AISI 3166'SS **M2** NICKEL **M3** TITANIUM
M4 HASTELLOY'C' **M5** SILVER
M6 MONEL **M7** TANTALUM

GASKETS

N1 PTFE SEAL GASKET 200°C **N2** METAL SEAL

PROCESS CONNECTION 接續牙口

O1 3/8"BSP(F) **O2** 1/2"NPT(F) **O3** 1/4"BSP(M)
O4 1/2"BSP(F) **O5** 1/4"NPT(F) **O6** 3/8"NPT(M)
O7 1/4BSP(F) **O8** 3/8"BSP(M) **O9** 1/4"NPT(M)
O10 3/8NPT(F) **O11** 1/2"BSP(M) **O12** 1/2"NPT(M)

Note: Connections like PT/PF/Flaired/UNF/G/R etc.canbe provided on request.

The material of adaptor is same as per bottom chamber material.

INSTRUMENT CONNECTION 本體牙口

Q1 1/2"BSP(F) **Q2** 1/4"BSP(F) **Q3** 1/4"NPT(F)
Q4 1/2"NPT(F) **Q5** 3/8"NPT(F) **Q6** 3/8" BXP(F)

BOTTOM CHAMBER

D1 AISI 316 SS

NUTS & BOLTS FOR SEALED CHAMBER CLAMPING 核心與螺栓

R1 AISI 304 SS

FLUSHING RING 活動柱環

S1 FLUSHING RING WITH 1/2"NPT PLUG(AISI 304 SS) **S2** FLUSHING RING WITH 1/4"NPT PLUG(AISI 304 SS)
S3 FLUSHING RING WITH 1/2"NPT PLUG(AISI 316 SS) **S4** FLUSHING RING WITH 1/4"NPT PLUG(AISI 316 SSA)

FILLNG FLUIDS 填充液

T1 FLUROLUBE 4.2[-45 TO 175°C/-49 TO374 ° F] **T2** SILICON DC 704 [0 TO 205°C/-32 TO401 ° F]
T3 FLUROLUBE 6.3[-40 TO 235°C/-40 TO455 ° F] **T4** SILICON DC 710 [5TO 345°C/-41 TO653 ° F]
T5 FLUROLUBE FS5[-40 TO 150°C/-40 TO302 ° F] **T6** SYLTHERM 800 [-45 TO205°C/-49 TO401° F]
T7 FOOD GRADE OIL[-20 TO 140°C/-4 TO284 ° F] **T8** SYLTHERM XLT [-75 TO150°C/-102TO302° F]
T9 SILICON DC200-10CS[-40 TO 205°C/-40 TO401 ° F] **T10** HALOCARBON OIL

PROTECTION ON WETTED PARTS

V1 PTFE LINING ON BOTTOM CHAMBER-2mm THICK **V2** PTFE PROTECTION FOR DIAPHRAGM
V3 PTFE COATING ON DIAPHRAGM

TYPE

G1 WITHOUT CAPILLARY **G2** WITH CAPILLARY

CAPILLARY

H1 AISI 304 SS **H2** AISI 316 SS

CAPILLARY COVERED WITH ARMOUR

I1 AISI 304 SS **I2** AISI 316 SS **I3** PVC

CAPILLARY LENGTH(Max up to 6Mtrs.)

IN METERS (e.g.1.5= 1.5METERS 2.0=2METERS)

OTHER ORTIONS

K3 HELIUM LEAK TEST **K4** DRY SEAL ONLY WITHOUT INSTRUMENT

Ordering Example:

BBQ-YA-M3-N1-O1-Q1-D1-R1-S1-T1-V1-G1-H1-I2 -3Mtr.- K3

Note: · Due to continuous improvement, the specification may vary from time to time.

BBQ

YA

M3

N1

O1

Q1

D1

R1

S1

T1

V1

G1

H1

I2

3Mtr

K3