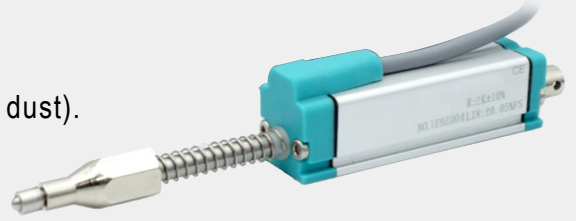


- Small size.
- Up to 50 million movements.
- Sensor with return spring.
- Can be used in a variety of harsh environments (moisture, oil, dust).
- Protection level IP67.
- Unaffected by shock and vibration.
- Configurable voltage and current (2-wire, 3-wire) modules.



CHARACTERISTIC

- ◆ Dual support lever.
- ◆ Equipped with a return spring, the head is automatically positioned, making it the best solution for accurately checking cams and checking off automated line products.
- ◆ The application of stainless steel balls is not subject to lateral to sensor axis transformation.
- ◆ Ideal for checking the flatness or thickness of panels of various materials, or for mechanical parts that cannot be attached to moving objects when used with valves or rods.

SPECIFICATION

Electrical Parameter

- ◆ R tolerance: $\pm 20\%$
- ◆ Repeatability precise: 0.01mm
- ◆ Cusor current : $\leq 1\mu A$
- ◆ Max cusor current: 10mA
- ◆ Power supply: 42V
- ◆ Coefficient Volts to Temp: 5ppm/K
- ◆ Insulation R: $\geq 10M\Omega$
(500Vdc, 1bar, 2s)
- ◆ Insulation strength: $\leq 100\mu A$
(50Hz, 1bar, 2s, 500Vdc)

Mechanical Parameter

- ◆ Shell Length(A): Stroke+43mm

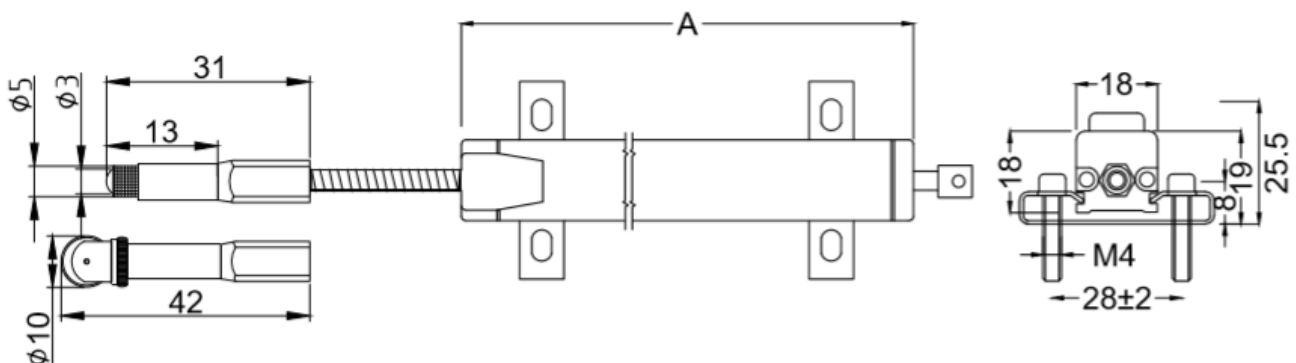
Operation force

- ◆ Horizontal installation : $\leq 1.1N$

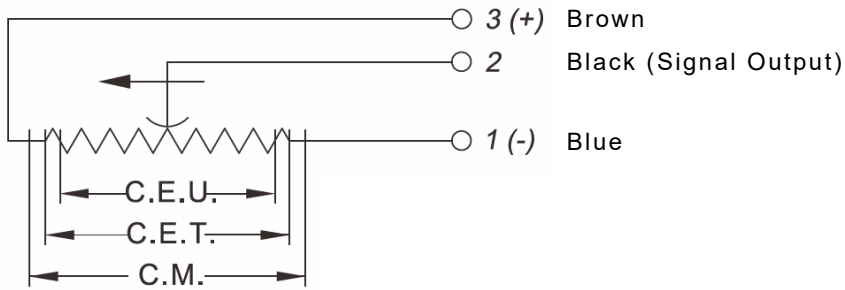
Environment Parameter

- ◆ Temperature range: $-40\sim 100^{\circ}C$
- ◆ Life time: $>50 \times 10^6$
- ◆ Shock: 50g 6ms
- ◆ Working speed: 3m/s maximum
- ◆ Protection class: IP50

DIMENSION



WIRING CONNECTION



ORDER INFORMATION

CTR- -
 Model Connector
 (Roller / Induction)

Electrical Parameter					Mechanical Parameter
Model	Nominal stroke (mm)	Electric stroke (mm)	Standard R (KΩ)	Independent Linearity(%)	Mechanical stroke(M)
15	15	15.5	5	0.3	19
25	25	25.5	5	0.2	29.5
50	50	50.5	5	0.1	54.5
75	75	75.5	5	0.1	79.5
100	100	101	5	0.1	105

Shipping standard: brackets x2 / (M4) Screws x4 /
 Roller connector or induction connector x1