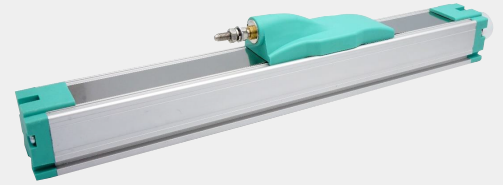


- Rodless design.
- Ball hinge avoids lateral forces.
- Long service life, more than 50×10^6 times of operation.
- Resolution is better than 0.01mm.
- High running speed.
- DIN43650 Standard plug and socket.
- Protection class IP50.
- Configurable voltage and current (2-wire, 3-wire) modules.



CHARACTERISTIC

- ◆ The improved design meets the needs of a wide range of measurement conditions.
- ◆ Secure the mechanical connection with the M4 screw.
- ◆ After the theoretical electrical stroke is exceeded, no electrical signal output changes and the installation is simpler.
- ◆ The new notch design is an ideal alternative to traditional bracket-mounted systems.
- ◆ Widely used in plastic molding machines.

SPECIFICATION

Electrical Parameter

- ◆ R tolerance: $\pm 10\%$
- ◆ Repeatability precise: 0.01mm
- ◆ Cursor current : $\leq 1\mu A$
- ◆ Max cursor current: 10mA
- ◆ Power supply: 42V
- ◆ Coefficient Volts to Temp: 5ppm/K
- ◆ Insulation R: $\geq 10M\Omega$
(500Vdc, 1bar, 2s)
- ◆ Insulation strength: $\leq 100\mu A$
(50Hz, 1bar, 2s, 500Vdc)

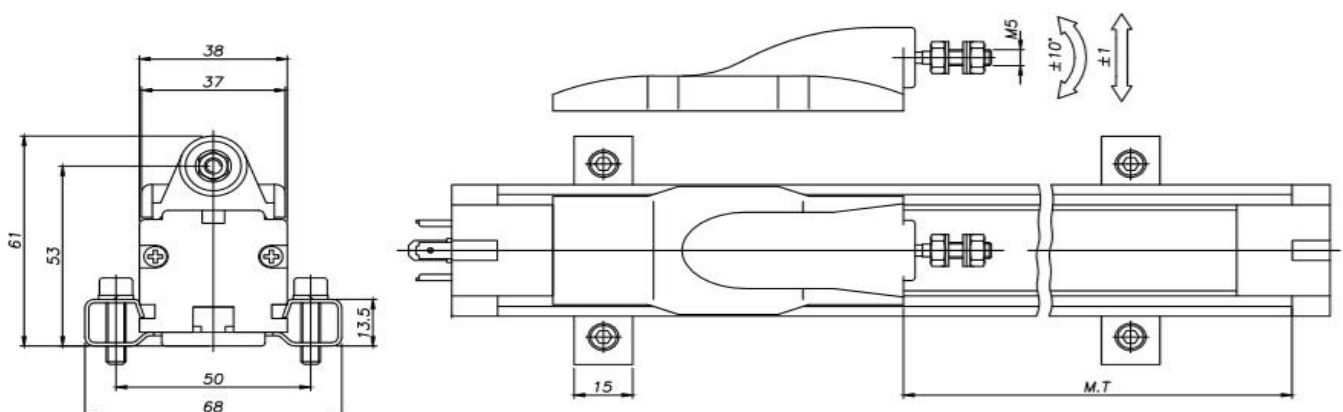
Operation force

- ◆ Ball head allows displacement: $\pm 5^\circ$
- ◆ Vertical installation: $\leq 0.4N$
- ◆ Horizontal installation : $\leq 1.1N$

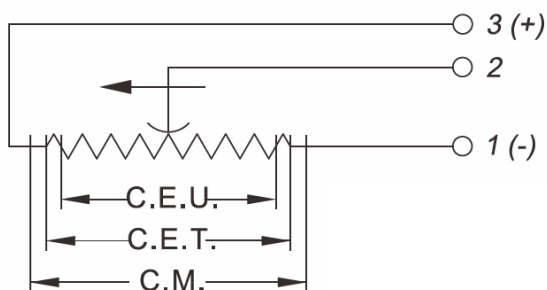
Environment Parameter

- ◆ Temperature range: $-40 \sim 100^\circ C$
- ◆ Life time: $> 50 \times 10^6$
- ◆ Shock: 50g 6ms
- ◆ Working speed: 10m/s maximum
- ◆ Protection class: IP50

DIMENSION



WIRING CONNECTION



ORDER INFORMATION CTF-

Model	Electrical Parameter				Mechanical Parameter	
	Nominal stroke (mm)	Electric stroke (mm)	Standard R (KΩ)	Independent Linearity(%)	Shell Length(A)	Mechanical stroke(M)
75	75	75.5	5	0.15	222	82.5
100	100	101	5	0.15	247	108
150	150	151	5	0.1	298	158
175	175	176.5	5	0.1	323	183.5
200	200	201.5	5	0.08	349	208.5
225	225	226.5	5	0.08	374	233.5
250	250	252	5	0.05	400	259
300	300	302	5	0.05	451	309
350	350	352.5	5	0.05	501	359
375	375	377.5	5	0.05	526	384.5
400	400	403	5	0.05	552	410
450	450	460	5	0.05	602	460
500	500	503.5	5	0.05	653	510.5
550	550	553.5	10	0.05	704	560.5
600	600	604	10	0.05	754	611
650	650	654	10	0.05	804	661
700	700	704.5	10	0.05	855	711.5
750	750	754.5	10	0.04	905	761.5
800	800	805	10	0.04	956	812
850	850	855.5	10	0.04	1006	862
900	900	905.5	10	0.04	1057	912.5
950	950	955.5	10	0.04	1107	962.5
1000	1000	1006	10	0.04	1158	1013
1250	1250	1259	20	0.04	1411	1266

Standard accessories: Hermans connector x1 / Seal x1 / brackets x2 / (M5) Screwsx4