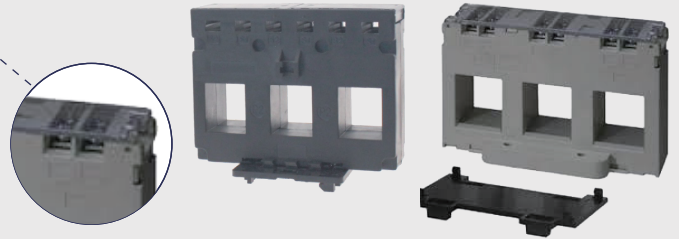


- C-series. (Barrier terminal strips)
- Aperture size (20\*25mm).
- Primary input 100A~250A.
- Secondary output 5Aac.
- Please do not use while the circuit is open.  
Be sure to connect the load device at first.

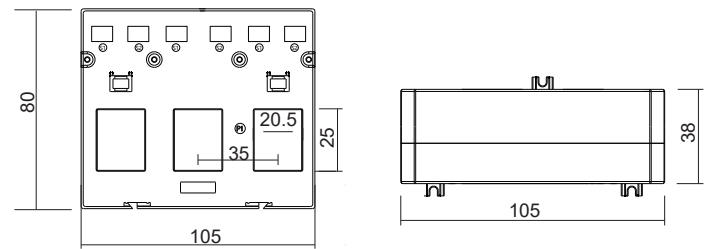


**SPECIFICATION**

- ◆ Frequency: 50~60 Hz
- ◆ Rated Current: 100A to 250A loads
- ◆ Rated Output: 5A (AC)
- ◆ Accuracy: Class 0.5 or 1 from 20% to 120% of rated current
- ◆ Phase angle: Less than 2 degrees at 50% of rated current
- ◆ Insulation Voltage: 600 Vac
- ◆ Maximum Primary Voltage: 5000 Vac (Insulated Conductor)
- ◆ Dielectric Strength: 2.5KV/ 1mA/ 1min
- ◆ Operating Temperature: -15°C to 60°C
- ◆ Operating Humidity: <85%
- ◆ Case Material: PC/UL94~V0
- ◆ Bobbin: PBT
- ◆ Core: Permalloy
- ◆ Internal Structure: Epoxy
- ◆ Burden: 100/ 5A (20\*25mm)  
150/ 5A (20\*25mm)  
200/ 5A (20\*25mm)  
250/ 5A (20\*25mm)

**DIMENSION**

- Burden: 100A, 150A, 200A, 250A



**ORDER INFORMATION**

DCSCT-20C - Code1 - Code2

Code1	Input Signal	Code2	Output
100	100 Aac	5	5 Aac
150	150 Aac		
200	200 Aac		
250	250 Aac		