

- Small size.
- Compact structure.
- Easy to install.
- Widely used in miniature control systems.



CHARACTERISTIC

- ◆ Long service life, up to 50×10^6 times.
- ◆ Higher resolution 0.01mm.
- ◆ High running speed.

SPECIFICATION

Electrical Parameter

- ◆ R tolerance: $\pm 10\%$
- ◆ Repeatability precise: 0.01mm
- ◆ Cusor current : $\cong 1\mu A$
- ◆ Max cusor current: 10mA
- ◆ Power supply: $\cong 24Vdc$
- ◆ Coefficient Volts to Temp: $\cong 1ppm/^{\circ}C$
- ◆ Insulation R: $\cong 10M\Omega$
(500Vdc, 1bar, 2s)
- ◆ Insulation strength: $\cong 100\mu A$
(50Hz, 1bar, 2s, 500Vdc)

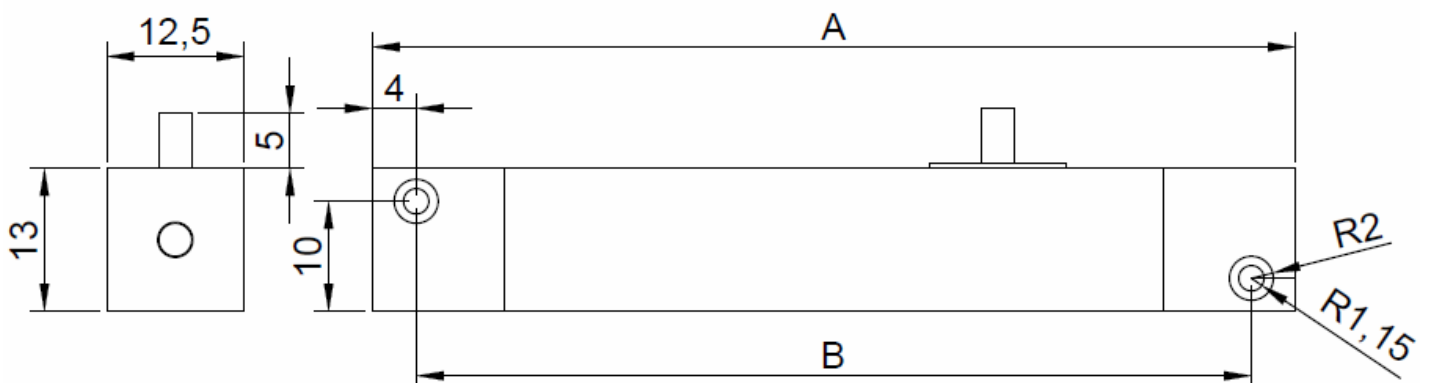
Operation force

- ◆ Vertical installation: Model+36mm
- ◆ Horizontal installation : Model+3mm

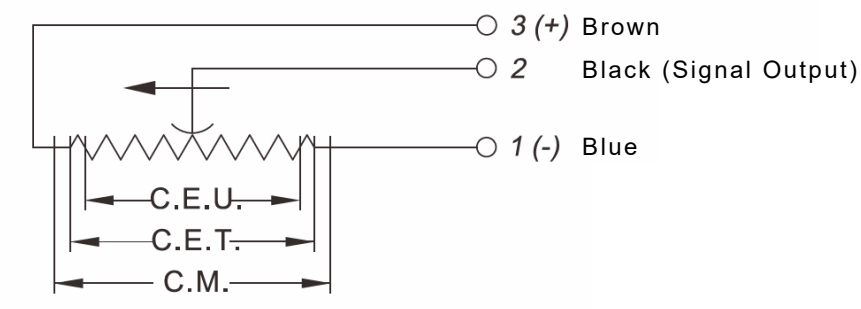
Environment Parameter

- ◆ Temperature range: 40~100°C
- ◆ Life time: $\cong 100 \times 10^6$ times
- ◆ Shock: 50g 6ms
- ◆ Working speed: $\cong 5m/s$

DIMENSION



WIRING CONNECTION



ORDER INFORMATION

DSF-

Electrical Parameter

Model	Nominal stroke (mm)	Electric stroke (mm)	Standard R (KΩ)	Independent Linearity(%)
15	5	5.5	5	0.3
25	10	10.5	5	0.3
35	35	35.5	5	0.3
50	50	51	5	0.3
100	100	101	5	0.3