

- Improved design to meet the measurement needs of various conditions.
- The sensor is rugged and shock-resistant.
- No electrical signal output changes after theoretical electrical travel, making installation easier.



CHARACTERISTIC

- ◆ Long service life, up to 50×10^6 times.
- ◆ Small size.
- ◆ Higher resolution 0.01mm.
- ◆ High running speed.
- ◆ Ball joint for free movement at large angles ($\pm 12.5^\circ$).
- ◆ Protection level IP67.
- ◆ Configurable voltage and current (2-wire, 3-wire) modules.

SPECIFICATION

Electrical Parameter

- ◆ R tolerance: $\pm 5\%$
- ◆ Repeatability precise: 0.01mm
- ◆ Cursor current : $\leq 1\mu A$
- ◆ Max cursor current: 10mA
- ◆ Max power supply Volts: 42V
- ◆ Coefficient Volts to Temp: 5ppm/K
- ◆ Insulation R: $\geq 10M\Omega$
(500Vdc, 1bar, 2s)
- ◆ Insulation strength: $\leq 100\mu A$
(50Hz, 1bar, 2s, 500Vdc)

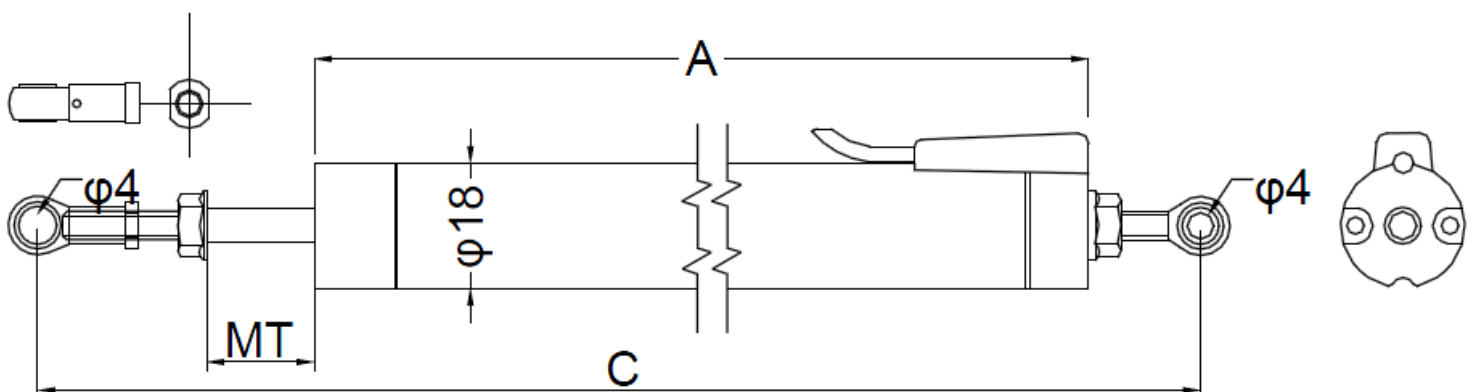
Operation force

- ◆ Pull ball displacement tolerance: $\pm 12.5^\circ$
 $\pm 0.5mm$ parallel
- ◆ Vertical installation: $\leq 0.4N$
- ◆ Horizontal installation : $\leq 1.1N$

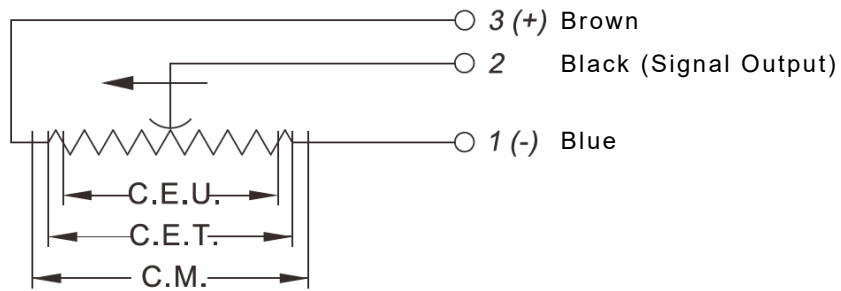
Environment Parameter

- ◆ Temperature range: $-40 \sim 100^\circ C$
- ◆ Life time: $> 50 \times 10^6$ times
- ◆ Shock: 50g 6ms
- ◆ Working speed: 10m/s maximum
- ◆ Protection class: IP65

DIMENSION



WIRING CONNECTION



ORDER INFORMATION

DPM-

Model	Electrical Parameter				Mechanical Parameter	
	Nominal stroke (mm)	Electric stroke (mm)	Standard R (K Ω)	Independent Linearity(%)	Shell Length(A)	Mechanical stroke(M)
25	25	25.5	5	0.3	78	30.5
50	50	50.5	5	0.25	103	55.5
75	75	75.5	5	0.15	128	80.5
100	100	101	5	0.1	153	106
125	125	126	5	0.08	178	131
150	150	151	5	0.08	203	156
175	175	176.5	5	0.08	228	181.5
200	200	201.5	5	0.05	253	206.5
225	225	226.5	5	0.05	278	231.5
250	250	252	5	0.05	303	257

Shipping standard: Fish eye connector x2