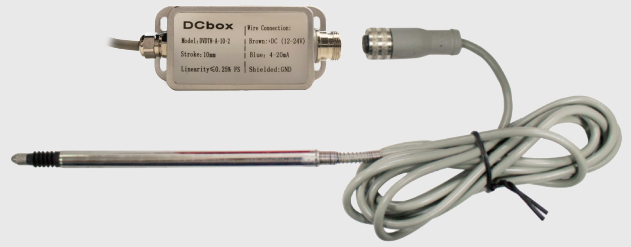


- Spring return type displacement sensor ,outer diameter Φ 8 mm.
- The silicon nitride ceramic probe with good wear resistance.
- Measuring range :0-10mm, high resolution,high repeatability.
- AC signal power supply, external with high - performance signal demodulator.
- 4-20mA output (2wires) and 0-10V (3 wires).
- No sliding contact, long service life.



SPECIFICATION

- | | | | |
|-------------------|--|---------------------------|---|
| ◆ stroke | : 2.5mm,5mm,10mm | ◆ Dynamic characteristics | : 10Hz |
| ◆ Output signal | : 0~10V, 4~20mA, RS485 | ◆ Impact resistance | : 250g/11 ms |
| ◆ Resolution | : $\leq 0.1\mu\text{m}$ (Max. digital output is 16bit) | ◆ Vibration allowed limit | : 10g/2KHZ |
| ◆ Linearity | : $\leq \pm 0.25\%FS$ | ◆ Driving voltage | : 3Vrms |
| ◆ Repeatability | : Max. 1um | ◆ Driving frequency | : 5KHZ |
| ◆ Power supply | : +12~30V DC | ◆ Temperature coefficient | : Null points $\leq 0.01\%/^{\circ}\text{C}$ |
| ◆ Working current | : Voltage output current: <10mA
2-wires 4~20mA output current: 4~25mA
RS485 output current:15~40mA | ◆ Sensitivity | : $\leq 0.025\%/^{\circ}\text{C}$ |
| | | ◆ Operating temperature | : -25 $^{\circ}\text{C}$ +85 $^{\circ}\text{C}$ |

ORDER INFORMATION

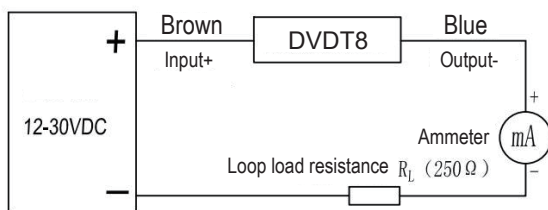
DVDT8- Code1 - Code2 - Code3

Code1	Output Signal	Code2	Measuring Range	Code3	Accuracy
A	4~20mA	25	2.5	1	Measuring range 5: $\leq 0.1\%$, 2.5
V2	0~10V	5	5	2	Pen type: $\leq 0.25\%$
Y	RS485	10	10		

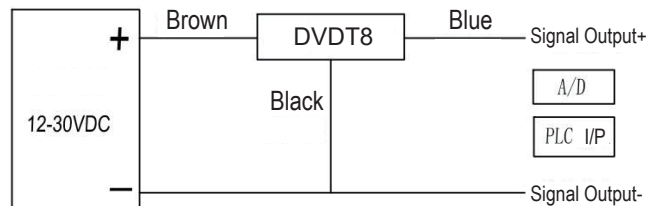
WIRING CONNECTION

The output voltage of the dc stabilized voltage supply must be within the specified range.

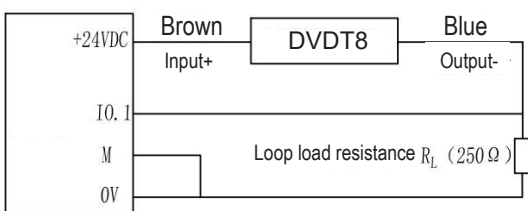
● 2 wires current



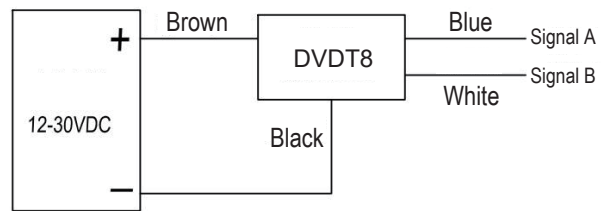
● Voltage



● 3. 4 wires current



● RS485

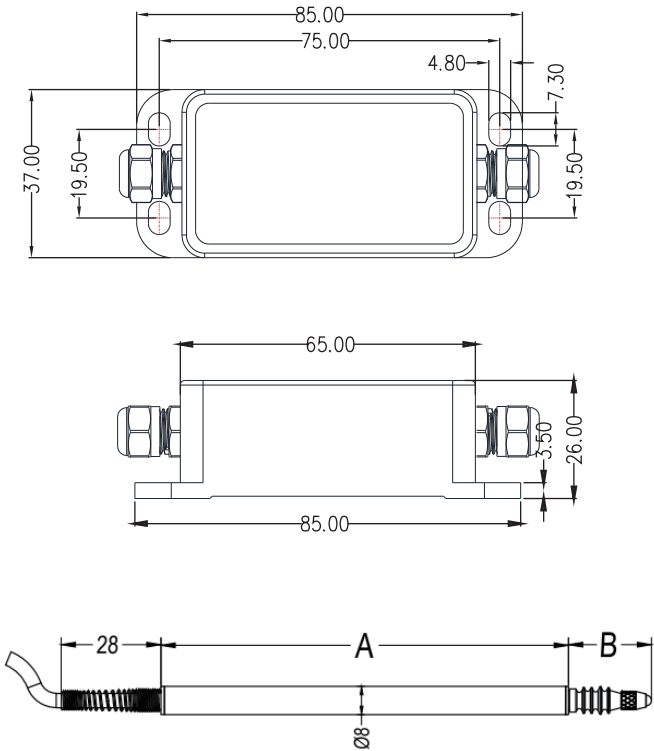


1.The wire connection for 4-20mA output:
Brown:power supply positive(+) current input (+)
Blue: power supply negative (-) current output (-)

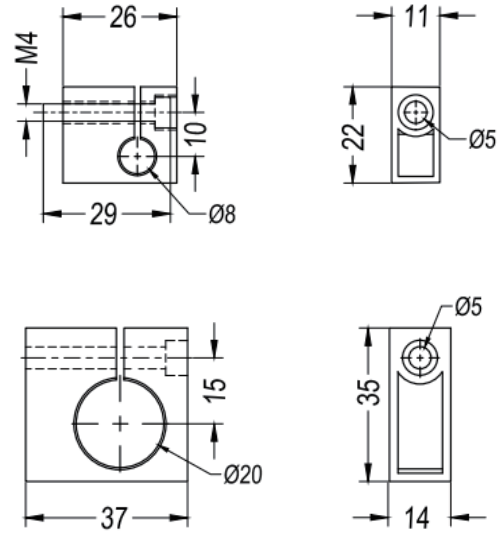
2.The wire connection for voltage output:
Brown: power supply positive(+)
Black: power supply negative (-) output signal (-)
Blue: voltage output (+)

3.The wire connection for RS485 output:
Brown: power supply positive(+)
Black: power supply negative (-)
Blue: signal A
White: signal B

DIMENSION



● Install Fixture



Specification	DVDT8		
	2.5	5	10
Range (mm)	2.5	5	10
Length of part A (mm)	105	115	121
Length of part B (mm)	20	23	30

The pen displacement sensor has an outer diameter of 8mm. Which is a transmitter without a circuit demodulator inside. The external transmitter is connected by aviation plug. The output signal can be 0-10 or 4-20mA through the external transmitter.

INSTALLATION

The installation of LVDT need to use non-metallic fixture with small temperature expansion coefficient to fix. If the fixture is installed with metal block, the product performance will be affected.

