

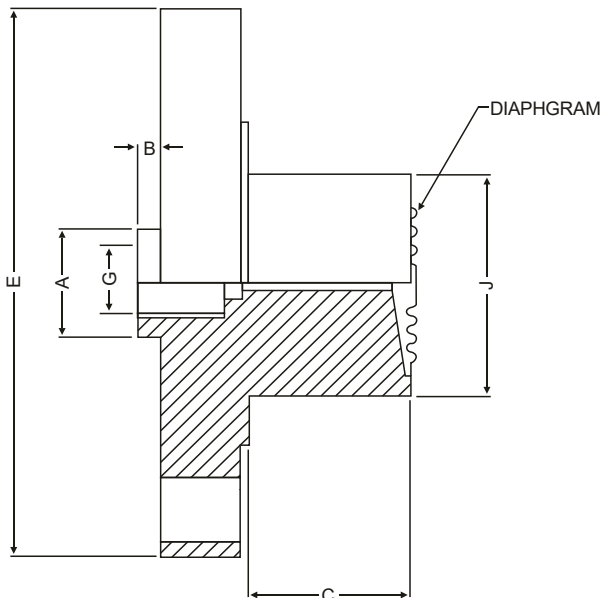
- Suitable for Slurry/ Viscous Fluids.
- Continuous Duty.
- Welded Diaphragm.
- Flanged Connection.
- Diaphragm seals are provided in the instrument like pressure gauges, switches, Transmitter in order to isolate the sensing element from the main service due to its corrosive, viscous and sedimented nature and to avoid clogging and solidification.



SPECIFICATION

- ◆ Range: 1kg/cm²~60kg/cm².
- ◆ Process Temp.: -40°C~200°C or per fill fluid.
- ◆ Instrument Connection: 3/8" BSP(F).
- ◆ Process Connection: Flange (as per DIN/ BS/ ANSI/ JIS)
Finish 125~250AARN
40NB (1 1/2") to 80NB (3") (as required).
- ◆ Diaphragm : AISI316L SS.
- ◆ Body: AISI316 SS.
- ◆ Extension: 50mm (other on request).
- ◆ Fill Fluid: Silicon Oil-DC200.

DIMENSION



Notes: • Drawings are not to scale. • All Dimensions are in mm.

| A | B | ~C | E | G | J |
|----|---|----|----|------------|-----|
| 30 | 8 | * | ** | 3/8"BSP(F) | *** |

*AS REQUIRED BY CUSTOMER
** as per standard flange table ANSI, DIN, BS, JIS Etc.
*** DIAPHRAGM SUITABLE FOR FLANGE RF AND RANGE

FLANGE CONNECTION CODES

DIN 2527

| DN | PN | CODE |
|----|-----|------|
| 40 | 6 | A41 |
| | 10 | A42 |
| | 16 | A43 |
| | 25 | A44 |
| | 40 | A45 |
| | 64 | A46 |
| | 100 | A47 |
| | 160 | A48 |
| | 250 | A49 |
| | 400 | A50 |
| 50 | 6 | A51 |
| | 10 | A52 |
| | 16 | A53 |
| | 25 | A54 |
| | 40 | A55 |
| | 64 | A56 |
| | 100 | A57 |
| | 160 | A58 |
| | 250 | A59 |
| | 400 | A60 |

| DN | PN | CODE |
|----|-----|------|
| 65 | 6 | A61 |
| | 10 | A62 |
| | 16 | A63 |
| | 25 | A64 |
| | 40 | A65 |
| | 64 | A66 |
| | 100 | A67 |
| | 160 | A68 |
| | 250 | A69 |
| | 400 | A70 |
| 80 | 6 | A71 |
| | 10 | A72 |
| | 16 | A73 |
| | 25 | A74 |
| | 40 | A75 |
| | 64 | A76 |
| | 100 | A77 |
| | 160 | A78 |
| | 250 | A79 |
| | 400 | A80 |

BS - 10

| NOMINAL SIZE | TABLE | CODE |
|--------------|-------|------|
| 1 1/2" | D | C09 |
| | E | C10 |
| | F | C11 |
| | H | C12 |
| | J | C13 |
| | K | C14 |
| | 2" | D |
| E | | C16 |
| F | | C17 |
| H | | C18 |
| J | | C19 |
| K | | C20 |

| NOMINAL SIZE | TABLE | CODE |
|--------------|-------|------|
| 2 1/2" | D | C21 |
| | E | C22 |
| | F | C23 |
| | H | C24 |
| | J | C25 |
| | K | C26 |
| 3" | D | C27 |
| | E | C28 |
| | F | C29 |
| | H | C30 |
| | J | C31 |
| | K | C32 |

ORDER INFORMATION

BASIC MODEL

OPTIONS

FOR NON STANDARD PRODUCTS/OPTIONAL, PLEASE CONTACT FACTORY FOR DELIVERY AND MINIMUM QUANTITY OF ORDER.

INSTRUMENT CONNECTION

| | | |
|---------------|-------------|-------------|
| Q2 1/4" BSP | Q3 1/4" NPT | Q1 1/2" BSP |
| Q6 3/8" BS(F) | Q5 3/8" NPT | Q4 1/2" NPT |

DIAPHRAGM MATERIAL

| | |
|-----------------|--------------|
| AH1 AISI 316SS | AH2 SILVER |
| AH3 HASTELLOY'C | AH4 TANTALUM |
| AH5 MONEL | AH6 TITANIUM |
| AH7 NICKEL | |

PROCESS CONNECTION

AS PER DIN/ BS /ANSI /JIS (SELECT CODE FROM TABLE)

BODY

| | | |
|-----------------|------------------|--------------|
| AF4 AISI SS316L | AF5 HASTELLOY'G' | AF6 TITANIUM |
| AF3 AISI SS316 | AF7 MONEL | |

FILLING FLUIDS

T9 SILICON DC200-10CS [-40 TO 205°C / -40 TO 401°F]
T2 SILICON DC 704 [0 TO 315°C / 32 TO 599°F]
T4 SILICON DC 710 [5 TO 345°C / 41 TO 653°F]
T6 SYLTHERM 800 [-45 TO 205°C / -49 TO 401°F]
T8 SYLTHERM XLT [-75 TO 150°C / -102 TO 302°F]
T1 FLUROLUBE 4.2 [-45 TO 175°C / -49 TO 374°F]
T3 FLUROLUBE 6.3 [-40 TO 235°C / -40 TO 455°F]
T5 FLUROLUBE FS5 [-40 TO 150°C / -40 TO 302°F]
T7 FOOD GRADE OIL [-20 TO 140°C / -4 TO 284°F]
T10 HALOCARBON OIL

PROTECTION ON WETTED PARTS

U3 PTFE PROTECTION FOR DIAPHRAGM

TYPE

G1 WITHOUT CAPILLARY G2 WITH CAPILLARY

CAPILLARY

H1 AISI 304SS H2 AISI 316SS

CAPILLARY COVERED WITH ARMOUR

I1 AISI 304SS I2 AISI 316SS I3 PVC

CAPILLARY LENGTH(Max up to 6Mtrs.)

IN METERS (e.g. 1.5= 1.5 METERS 2.0= METERS)

OTHER OPTIONS

K3 HELIUM LEAK TEST K4 DRY SEAL ONLY WITHOUT INSTRUMENT

Ordering Example:

BBY-Q2-AH1-B54-AF4-T9-U3-G1-H1-I1-3Mtr.-K3

Note : ● Due to continuous improvement, the specification may vary from time to time.

BBY

Q2

AH1

B54

AF4

T9

U3

G1

H1

I1

3Mtr.

K3