

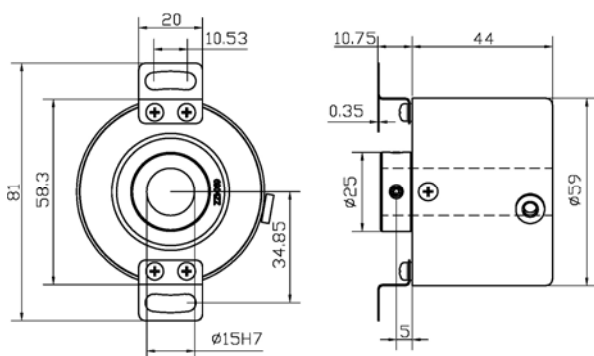
- Hollow Shaft 15 mm
- Mounting PCD 70.5
- 5 ~ 2500 PPR



SPECIFICATION

◆Output Wave	Square
◆Standard Number of Pulse Per Revolution	5, 10, 20, 30, 40, 50, 60, 80, 100, 120, 150, 180, 200, 250, 300, 360, 400, 500, 600, 720, 800, 900, 1000, 1024, 2000, 2500
◆Output Phase	ABZ phase
◆Electronics	Push Pull , Line Driver
◆Power Supply	DC 5~26V
◆Current Consumption	≤ 60 mA
◆Output Capacity	Sync. Current: 20 mA, Residual Voltage: 0.5V or less
◆Max. Response	10K Hz ~ 100K Hz
◆Phase Different	A, B phase different 90°±45° (T/4±T/8), Z phase T±T/2
◆Wave Form Rise / Fall	2 μs or less
◆Polarity	Against Reverse Protection
◆Hollow Shaft Diameter	12, 15 mm
◆Shaft Loading	(60 ~ 1024 PPR) Axial: 3 Kg, Radial: 5 Kg (over 1024 PPR) Axial: 2 Kg, Radial: 4 Kg
◆Starting Torque (at 25°C)	≤ 600 gf-cm
◆Max. Speed	6,000 rpm
◆Vibration	10g (10±1,500 Hz)
◆Shock	20g per 11 ms
◆Cable	Ø5.4, 100 cm long
◆Weight	≤ 450g
◆Operating Temp. / Humi	-10°C ~ 60°C, RH 35%~90% (No Condensation)
◆Storage Temp.	-20°C ~ 80°C
◆Protection	IP50: Dust Proof

DIMENSION



ORDER INFORMATION

HTR-HM- Code1 - Code2 A - Code3

Code1	Hole Size	Code2	Pulse/ Revolution
12	Ø12		5, 10, 20, 30, 40, 50, 60, 80, 100, 120, 150, 180,
15	Ø15		200, 250, 300, 360, 400, 500, 600, 720, 800,
			900, 1000, 1024, 2000, 2500
Code3	Electronics		
P	Push Pull		
H	Line Driver		