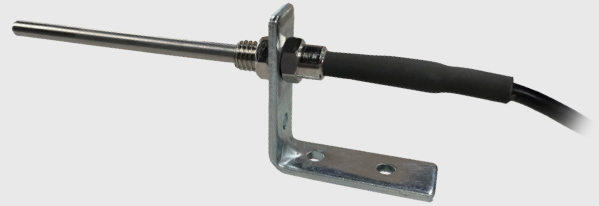
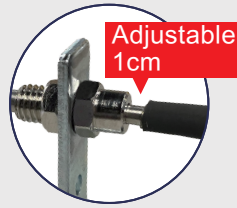


- Accuracy:  $\pm 0.2\%$  R.O.(PT-100).  
 $\pm 0.3\%$  R.O.(K).
- Material class: A class.
- Response Time: 15 seconds.
- Adjustable range: 1cm.
- Certification: DIN IEC 60751.



**SPECIFICATION**

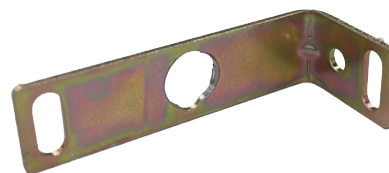
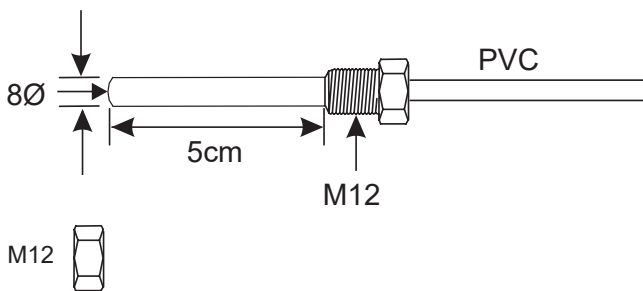
- ◆ Accuracy:  $\pm 0.2\%$  R.O. (PT-100)  
 $\pm 0.3\%$  R.O. (Thermocouple: K)
- ◆ Measuring Range: K: 0~1200°C  
PT-100: -100~800°C
- ◆ Output Ripple:  $\leq \pm 0.3\%$  R.O.
- ◆ Temperature Coefficient: 100ppm/°C (0~60°C)
- ◆ Operating Humidity: 20 to 90% RH (non-condensing)
- ◆ Storage Humidity: 20 to 90% RH (non-condensing)
- ◆ Input Impedence: Thermocouple:  $\geq 1M\Omega$   
PT-100:  $\geq 10M\Omega$
- ◆ Material: Tube Thread: Steel 316  
Head: Aluminum

**ORDER INFORMATION**

BTL-HS - Code1 Code2 - Code3 - Code4 Code5  
- 80

Code1	Input Type	Code3	Tube Length	Code4	Wiring Length
K	K Type	02	20 mm	03	3 M
P	RTD (PT-100)	03	30 mm	10	10 M
		04	40 mm	40	40 M
		05	50 mm	O	Option
Code2	Tube Diameter	Code5	Wiring Material		
3	3.2 mm	06	60 mm	T	Teflon
5	5 mm	95	95 mm	F	Iron
6	6 mm	O	Option	P	PVC

**DIMENSION**



Fixing Bracket