

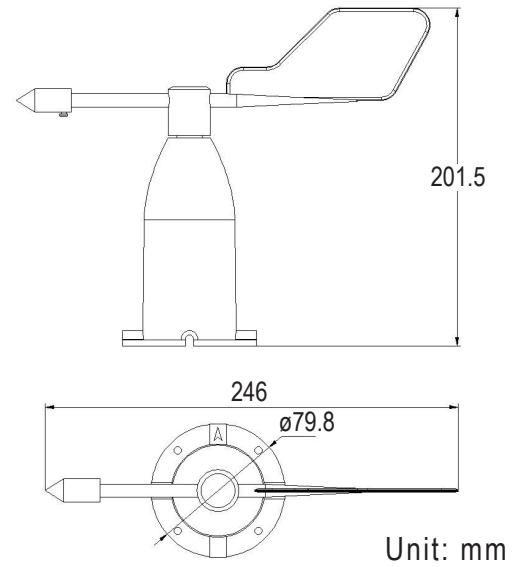
- Range: 0-60m/s, resolution: 0.1m/s.
- Anti-electromagnetic interference processing.
- High-performance imported bearing is adopted, with small rotating resistance and accurate measurement.
- It can be used for both four-wire and three-wire connection.
- Modbus RTU communication protocol.



**SPCIFICATION**

- ◆ Power supply : 10~30VDC
- ◆ Maximum power : Current/ Voltage output: 0.6W consumption
- ◆ Operating temperature : -40°C~+60°C,0%RH~80%RH .
- ◆ Measurement range : 8 diretion
- ◆ Dynamic influence time : ≤0.5s
- ◆ Output signal : Current: 4~20mA  
Voltage: 0~10V
- ◆ Load capacity : Current: ≤600Ω  
Voltage: output resistance ≤250Ω
- ◆ Communicate : 485 communication (Modbus) protocol  
Data bit length: 8 bits  
Parity mode: None  
Stop bit length: 1 bit  
Standard Modbus communication address: 1  
Baud Rate: 2400. 4800(Standard). 9600.  
19200. 38400. 57600. 115200

**DIMENSION**



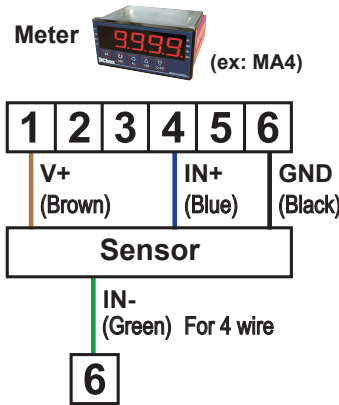
**ORDER INFORMATION**

DCFXA- Code1

Code1 Output Signal

A	4~20mA
V	0~10V
Y	RS-485
O	Option

**WIRING CONNECTION**



**CALCULATION METHOD (8 DIRECTION)**

4-20mA Output		0-10V Output		0-5V Output	
Value (mA)	Wind Direction	Value (V)	Wind Direction	Value (V)	Wind Direction
≈4	N	≈0	N	≈0	N
≈6.2857	EN	≈1.4286	EN	≈0.7143	EN
≈8.5714	E	≈2.8571	E	≈1.4286	E
≈10.8571	ES	≈4.2857	ES	≈2.1429	ES
≈13.1429	S	≈5.7143	S	≈2.8571	S
≈15.4286	WS	≈7.1429	WS	≈3.5714	WS
≈17.7143	W	≈8.5714	W	≈4.2857	W
≈20	WN	≈10	WN	≈5	WN