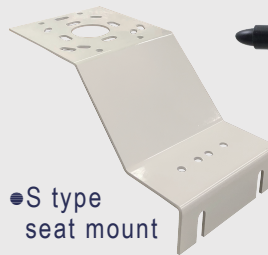


- Range: 0~359.9°
- Anti-electromagnetic interference processing.
- **Polycarbonate shell** with high mechanical strength, high hardness, corrosion resistance, and long-term outdoor use.
- High-performance imported bearing is adopted, with small rotating resistance and accurate measurement.
- It can be used for both four-wire and three-wire connection.

● I type seat mount



● S type seat mount



**SPCIFICATION**

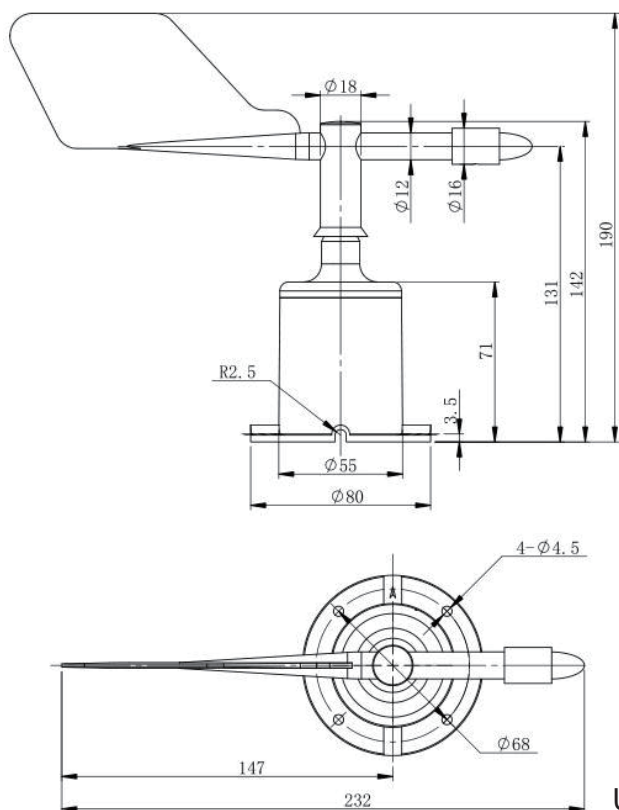
- ◆ Power supply : 10~30VDC
- ◆ Maximum power : Current/ Voltage output: 0.75W consumption
- ◆ Operating temperature : -20°C~+60°C, 0%RH~80%RH .
- ◆ Measurement range : 0~359.9°
- ◆ Accuracy : ±1°
- ◆ Dynamic influence time : ≤0.8s
- ◆ Output signal : Current: 4~20mA  
Voltage: 0~10V
- ◆ Load capacity : Current: ≤600Ω  
Voltage: output resistance ≤250Ω

**ORDER INFORMATION**

**DCFXJT-** Code1

Code1	Output Signal
A	4~20mA
V	0~10V
O	Option

**DIMENSION**



Unit: mm

**WIRING CONNECTION**

