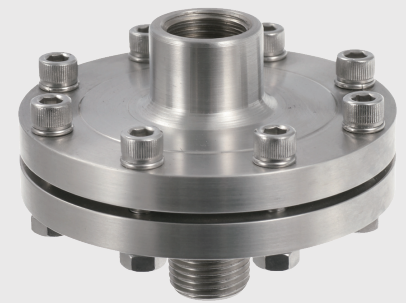


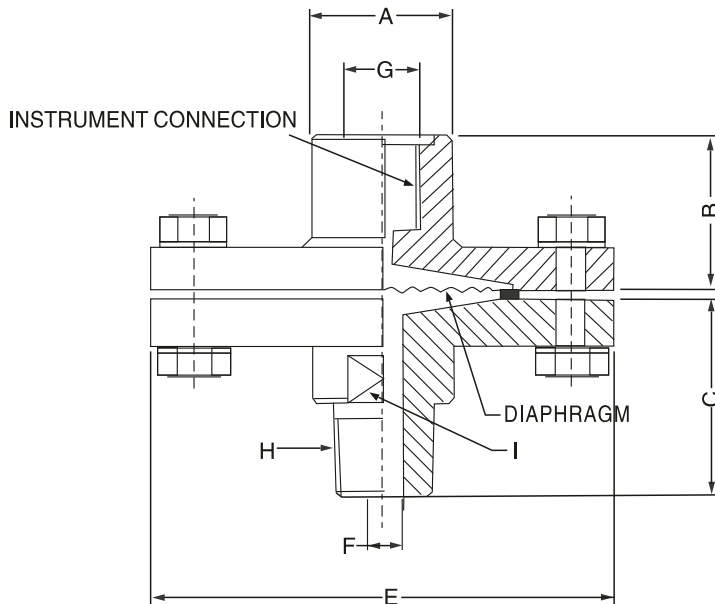
- Diaphragm directly welded to top chamber.
- Two piece construction.
- Ideal for general purpose application.
- Robust design, all SS construction.
- Diaphragm seals are provided in the instrument like pressure gauges, switches, transmitter in order to isolate the sensing element from the main service due to its corrosive, viscous and sedimented nature and to avoid clogging and solidification.



**SPECIFICATION**

- ◆ Range:  $-1\text{kg/cm}^2 \sim 70\text{kg/cm}^2$ .
- ◆ Process Temp.:  $-40^\circ\text{C} \sim 200^\circ\text{C}$  or per fill fluid.
- ◆ Instrument Connection: 3/8" BSP(F).
- ◆ Process Connection: 1/2" NPT(M).
- ◆ Diaphragm : AISI 316L SS.
- ◆ Top Chamber: AISI 316 SS(Forged).
- ◆ Bottom Chamber: AISI 316 SS(Forged).
- ◆ Nuts/ Bolts: AISI 304 SS
- ◆ Gaskte: PTFE(up to  $200^\circ\text{C}$ )/ Metal seal (up to  $350^\circ\text{C}$  ).

**DIMENSION**



A	~ B	~ C	E	F	G	H	I
30	25	47	60~110	Φ 8	3/8" BSP(F)	*	A/F 25

\*As Per customer Requirement.

Notes: • Drawings are not to scale. • All Dimensions are in mm.

# OEDER INFORMATION

## BASIC MODEL

### OPTIONS

FOR NON STANDARD PRODUCTS/OPTIONAL ITEMS, PLEASE CONTACT FACTORY FOR DELIVERY AND MINIMUM QUANTITY OF ORDER.

### TOP CHAMBER

AISI 316L SS

### DIAPHRAGM

**M1** AISI 3166'SS      **M2** NICKEL      **M3** TITANIUM  
**M4** HASTELLOY'C'      **M5** SILVER  
**M6** MONEL      **M7** TANTALUM

### GASKETS

**N1** PTFE SEAL GASKET 200°C      **N2** METAL SEAL

### PROCESS CONNECTION

**O1** 3/8"BSP(F)      **O2** 1/2"NPT(F)      **O3** 1/4"BSP(M)  
**O4** 1/2"BSP(F)      **O5** 1/4"NPT(F)      **O6** 3/8"NPT(M)  
**O7** 1/4BSP(F)      **O8** 3/8"BSP(M)      **O9** 1/4"NPT(M)  
**O10** 3/8NPT(F)      **O11** 1/2"BSP(M)      **O12** 1/2"NPT(M)

**Note:** Connections like PT/PF/Flaired/UNF/G/R etc.canbe provided on request.

The material of adaptor is same as per bottom chamber material.

### INSTRUMENT CONNECTION

**Q1** 1/2"BSP(F)      **Q2** 1/4"BSP(F)      **Q3** 1/4"NPT(F)  
**Q4** 1/2"NPT(F)      **Q5** 3/8"NPT(F)      **Q6** 3/8" BXP(F)

### BOTTOM CHAMBER

**D1** AISI 316 SS

### NUTS & BOLTS FOR SEALED CHAMBER CLAMPING

**R1** AISI 304 SS

### FLUSHING RING

**S1** FLUSHING RING WITH 1/2"NPT PLUG(AISI 304 SS)      **S2** FLUSHING RING WITH 1/4"NPT PLUG(AISI 304 SS)  
**S3** FLUSHING RING WITH 1/2"NPT PLUG(AISI 316 SS)      **S4** FLUSHING RING WITH 1/4"NPT PLUG(AISI 316 SSA)

### FILLING FLUIDS

**T1** FLUROLUBE 4.2[-45 TO 175°C/-49 TO374 ° F]      **T2** SILICON DC 704 [0 TO 205°C/-32 TO401 ° F]  
**T3** FLUROLUBE 6.3[-40 TO 235°C/-40 TO455 ° F]      **T4** SILICON DC 710 [5TO 345°C/-41 TO653 ° F]  
**T5** FLUROLUBE FS5[-40 TO 150°C/-40 TO302 ° F]      **T6** SYLTHERM 800 [-45 TO205°C/-49 TO401° F]  
**T7** FOOD GRADE OIL[-20 TO 140°C/-4 TO284 ° F]      **T8** SYLTHERM XLT [-75 TO150°C/-102TO302° F]  
**T9** SILICON DC200-10CS[-40 TO 205°C/-40 TO401 ° F]      **T10** HALOCARBON OIL

### PROTECTION ON WETTED PARTS

**V1** PTFE LINING ON BOTTOM CHAMBER-2mm THICK      **V2** PTFE PROTECTION FOR DIAPHRAGM  
**V3** PTFE COATING ON DIAPHRAGM

### TYPE

**G1** WITHOUT CAPILLARY      **G2** WITH CAPILLARY

### CAPILLARY

**H1** AISI 304 SS      **H2** AISI 316 SS

### CAPILLARY COVERED WITH ARMOUR

**I1** AISI 304 SS      **I2** AISI 316 SS      **I3** PVC

### CAPILLARY LENGTH(Max up to 6Mtrs.)

IN METERS (e.g.1.5= 1.5METERS 2.0=2METERS)

### OTHER ORTIONS

**K3** HELIUM LEAK TEST      **K4** DRY SEAL ONLY WITHOUT INSTRUMENT

### Ordering Example:

**BBQ-YA-M3-N1-O1-Q1-D1-R1-S1-T1-V1-G1-H1-I2 -3Mtr.- K3**

**Note:** · Due to continuous improvement, the specification may vary from time to time.

BBQ

YA

M3

N1

O1

Q1

D1

R1

S1

T1

V1

G1

H1

I2

3Mtr

K3