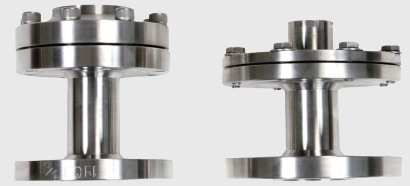


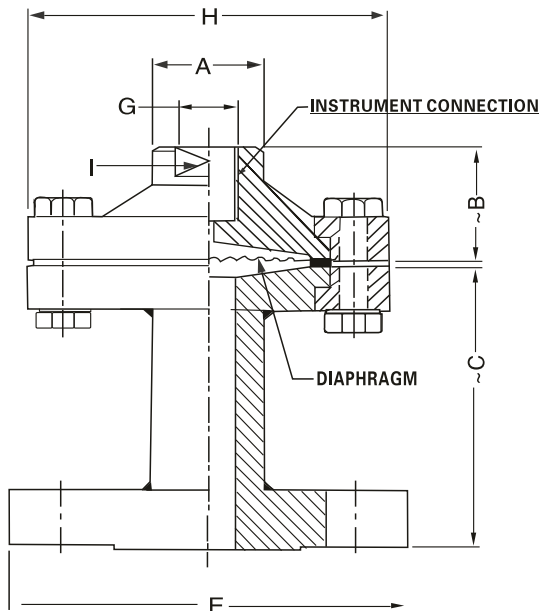
- Continuous duty.
- Isction extension to facilitate smaller flanged connection.
- Ideal for general purpose application.
- Diaphragm seals are provided in the instrument like pressure gauges, switches, transmitter in order to isolate the sensing element from the main service due to its corrosive, viscous and sedimented nature and to avoid clogging and solidification.



SPECIFICATION

- ◆Range: -1kg/cm²~21kg/cm².
- ◆Process Temp.: -40°C~200°C or per fill fluid. / -40°C~345°C without PTFE.
- ◆Instrument Connection: 3/8" BSP(F).
- ◆Process Connection: Flange (as per DIN/ BS/ ANSI/ JIS) Finish 125~250AARH.
- ◆Diaphragm : AISI 316L SS.
- ◆Body: AISI 304 SS.
- ◆“1”section (bottom chamber): AISI316 SS Flange (as per DIN/ BS/ ANSI/ JIS).
- ◆Gaskte slip ring (tension flange): PTFE(up to 200°C)/ Metal seal (up to 350°C steel chrome plated powder coated).
- ◆Fill Fluid: Silicon Oil-DC200 up to -40~200°C.

DIMENSION



Ranges	A	~B	~C	E	H	G	I
-1 to 2.5 kg/cm ²	30	31	75	*	90	3/8"BSP(F)	A/F 25
4 to 400kg/cm ²	30	31	75	*	60	3/8"BSP(F)	A/F 25

*-as per standard flange table ANSI,DIN,BS,JIS ETC.,

Notes: • Drawings are not to scale. • All Dimensions are in mm.

OEDER INFORMATION

BASIC MODEL

OPTIONS

FOR NON STANDARD PRODUCTS/OPTIONAL ITEMS, PLEASE CONTACT FACTORY FOR DELIVERY AND MINIMUM QUANTITY OF ORDER.

TOP CHAMBER

L1 AISI 316L SS L2 AISI 316 SS
L3 AISI 304 SS L4 CARBON STEEL

DIAPHRAGM

M8 PTFE M2 NICKEL M3 TITANIUM
M4 HASTELLOY'C M5 SILVER M1 AISI 316L SS
M6 MONEL' M7 TANTALUM

GASKET

N3 METAL N4 PTFE

TENSION FLANGE & NUT -BOLTS

AC1 AISI 304SS AC2 NICKEL PLATED MILD STEEL
AC3 AISI 316 SS

FLUSHING RING

S1 FLUSHING RING WITH 1/2"NPT PLUG (AISI 304 SS) S2 FLUSHING RING WITH 1/4"NPT PLUG(AIS 304 SS)
S3 FLUSHING RING WITH 1/2" NPT PLUG (AISI 316SS) S4 FLUSHING RING WITH 1/4"NPT plug (AISI 316 SS)Std.

BOTTOM CHAMBER(I SECTION)

P2 AISI 304 SS P3 CARBON STEEL P4 PVC P1 AISI 316 SS
P5 AISI 3161 SS P6 POLYPROPELENE P7 PVDF

INSTRUMENT CONNECTION

Q1 1/2"BSP(F) Q5 3/8"BSP(F)
Q2 1/4"NPT(F) Q7 1/2"NPT(F)
Q3 1/4"BSP(F) Q6 3/8"NPT(F)

PROCESS CONNECTION

AS PER DIN /BS/ANSI/JIS(SELECT CODE FROM TABLE)

T1 FLUROLUBE 4.2[-45 TO 175°C/-49 TO374 ° F] T2 SILICON DC 704 [0 TO 315°C/-32 TO599 ° F]
T3 FLUROLUBE 6.3[-40 TO 235°C/-40 TO455 ° F] T4 SILICON DC 710 [5TO 345°C/-41 TO653 ° F]
T5 FLUROLUBE FS5[-40 TO 150°C/-40 TO302 ° F] T6 SYLTHERM 800 [-45 TO205°C/-49 TO401° F]
T7 FOOD GRADE OIL[-20 TO 140°C/-4 TO284 ° F] T8 SYLTHERM XLT [-75 TO150°C/-102TO302° F]
T9 SILICON DC200-10CS[-40 TO 205°C/-40 TO401 ° F] T10 HALOCARBON OIL

PROTECTION ON WETTED PARTS

U1 PTFE LINING ON BOTTOM CHAMBER(ISECTION)-3mm THICK U2 PTFE PROTECTION FOR DIAPHRAGM
U3 PTFE COATING ON DIAPHRAGM

TYPE

G1 WITHOUT CAPILLARY G2 WITH CAPILLARY

CAPILLARY

H1 AISI 304 SS H2 WITH CAPILLARY

CAPILLARY COVERED WITH ARMOUR

I1 AISI 304 SS I2 AISI 316 SS I3 PVC

CAPILLARY LENGTH(Max up to 6Mtrs.)

IN METERS (e.g. 1.5)=1.5METERS 2.0=2METERS)

OTHER OPTIONS

K3 HELIUM LEAK TEST K4 DRY SEAL ONLY WITHOUT INSTRUMENT

Ordering Example:

BBV-L1-M8-N3-AC1-S1-P2-Q1-B11-T1-U1-G1-H1-I1-3Mtr.-K3

Note: ● Due to continuous improvement,the specification may vary from time to time.

BBV

L1

M8

N3

AC1

S1

P2

Q1

B11

T1

U1

G1

H1

I1

3Mtr.

K3