

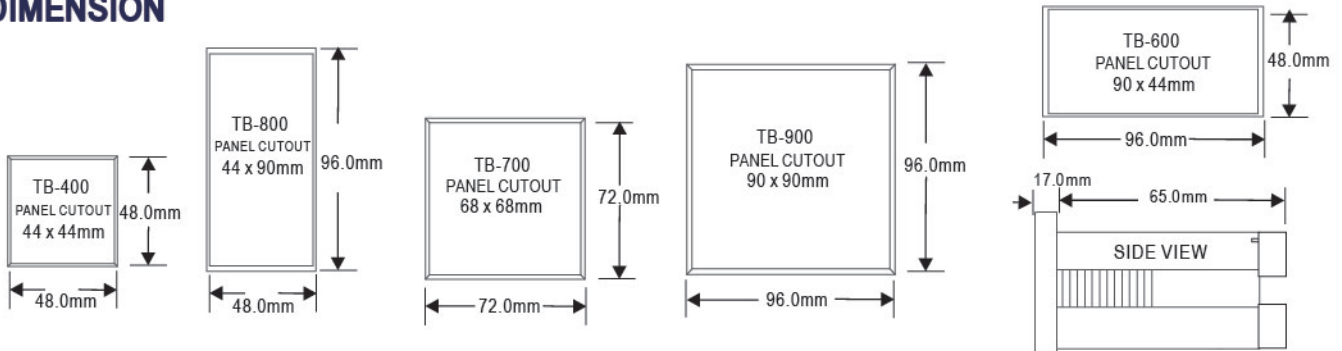
- Accuracy:  $\pm 0.3\%$  F.S.  $\pm 1$  digit
- Measuring Thermocouple / PT-100 / mAdc / Vdc
- Display range: -1999~9999; decimal point selectable
- Alarms output / Analog output optional
- High stability, non-flammable case (PC), high safety



**SPECIFICATION**

- |                    |                                                                                                                                                                                                                                                                                                                           |                            |                                                                                                        |
|--------------------|---------------------------------------------------------------------------------------------------------------------------------------------------------------------------------------------------------------------------------------------------------------------------------------------------------------------------|----------------------------|--------------------------------------------------------------------------------------------------------|
| ◆ Accuracy:        | $\pm 0.3\%$ F.S. $\pm 1$ digit                                                                                                                                                                                                                                                                                            | ◆ Over Range Indication:   | UUU1                                                                                                   |
| ◆ Measuring Range: | K: 0~400℃ / 0~1200℃<br>J: 0~400℃ / 0~1200℃<br>E: 0~1000℃<br>T: -1999.9~400℃ / 0~350℃<br>R: 0~1796℃<br>S: 0~1796℃<br>B: 0~1820℃<br>N: 0~1300℃<br>W: 0~2320℃<br>PL: 0~1390℃<br>U: -199.9~400℃ / 0~400℃<br>L: 0~800℃<br>PT-100: -199.9~600℃ / 0~600℃<br>Current: 0~20mAdc / 4~20mAdc<br>Voltage: 0~50mVdc / 0~10Vdc / 1~5Vdc | ◆ Units:                   | ℃ / °F                                                                                                 |
| ◆ Display Screen:  | High brightness LED                                                                                                                                                                                                                                                                                                       | ◆ Parameters Setting:      | Push buttons                                                                                           |
| ◆ Sampling Time:   | 2.5 cycles / sec                                                                                                                                                                                                                                                                                                          | ◆ Back Up Memory:          | EEPROM                                                                                                 |
| ◆ Display Range:   | -1999~9999                                                                                                                                                                                                                                                                                                                | ◆ Relay Contact:           | AC 240V / 5A; AC 240V / 3A (Alarm 2)                                                                   |
|                    |                                                                                                                                                                                                                                                                                                                           | ◆ Output Mode:             | On / Off control; PID control                                                                          |
|                    |                                                                                                                                                                                                                                                                                                                           | ◆ Output Capability:       | Voltage Output: <20mA; Current Output: <10V                                                            |
|                    |                                                                                                                                                                                                                                                                                                                           | ◆ Temperature Coefficient: | 100ppm / °C (0~60℃)                                                                                    |
|                    |                                                                                                                                                                                                                                                                                                                           | ◆ Operating Temperature:   | 0~60℃                                                                                                  |
|                    |                                                                                                                                                                                                                                                                                                                           | ◆ Operating Humidity:      | 20~90% RH (non-condensing)                                                                             |
|                    |                                                                                                                                                                                                                                                                                                                           | ◆ Storage Temperature:     | -10~70℃                                                                                                |
|                    |                                                                                                                                                                                                                                                                                                                           | ◆ Storage Humidity:        | 20~90% RH (non-condensing)                                                                             |
|                    |                                                                                                                                                                                                                                                                                                                           | ◆ Power Supply:            | AC 85~264V; DC 10~50V                                                                                  |
|                    |                                                                                                                                                                                                                                                                                                                           | ◆ Surge Test:              | 2KVac / 1min                                                                                           |
|                    |                                                                                                                                                                                                                                                                                                                           | ◆ Input Impedence:         | Thermocouple: $\geq 1M\Omega$<br>PT-100: $\geq 1M\Omega$<br>mAdc: 2.4 $\Omega$<br>Vdc: $\geq 1M\Omega$ |

**DIMENSION**



**ORDER INFORMATION**

TB - [Code 1] - [Code 2] - [Code 3] - [Code 4] - [Code 5] - [Code 6] - [Code 7] - [Code 8] - [Code 9]

Code 1	Dimensions	Code 2	Control Output 1	Code 3	Control Output 2	Code 4	Alarm Output	Code 5	Analog Output	Code 6	Remote SV	Code 7	Communication	Code 8	Input type	Code 9	Power
400	48x48 mm	1	Relay	0	None	1	1 Relay	0	None	0	None	0	None	K	N	A	AC 85~265V
600	48x96 mm (H)	2	Volt for SSR	1	Relay	2	2 Relays	1	4~20mA	1	4~20mA	1	RS232	J	T	D	DC 24V
700	72x72 mm	3	4~20 mA	2	Volt for SSR	3	3 Relays	2	0~20mA	2	0~20mA	2	RS485	R	W	O	DC 12V
800	96x48 mm (V)	4	0~20 mA	3	4~20 mA			A	0~5V	A	0~5V	3	TTL	S	PL		
900	96x96 mm	A	0~5V	4	0~20 mA			B	0~10V	B	0~10V	A	RS232-Modbus	B	U		
		B	0~10V					C	1~5V	C	1~5V	B	RS485-Modbus	E	L		
								D	2~10V	D	2~10V	D	2~10V				

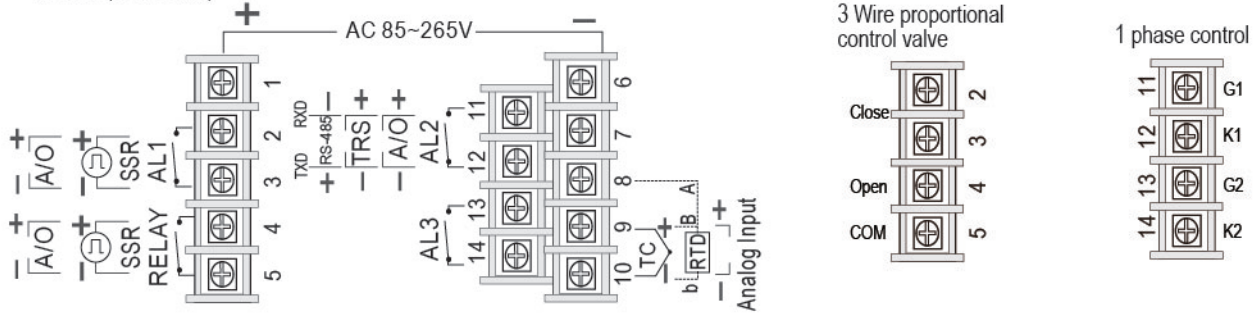
Refer to type table

※ Input type table

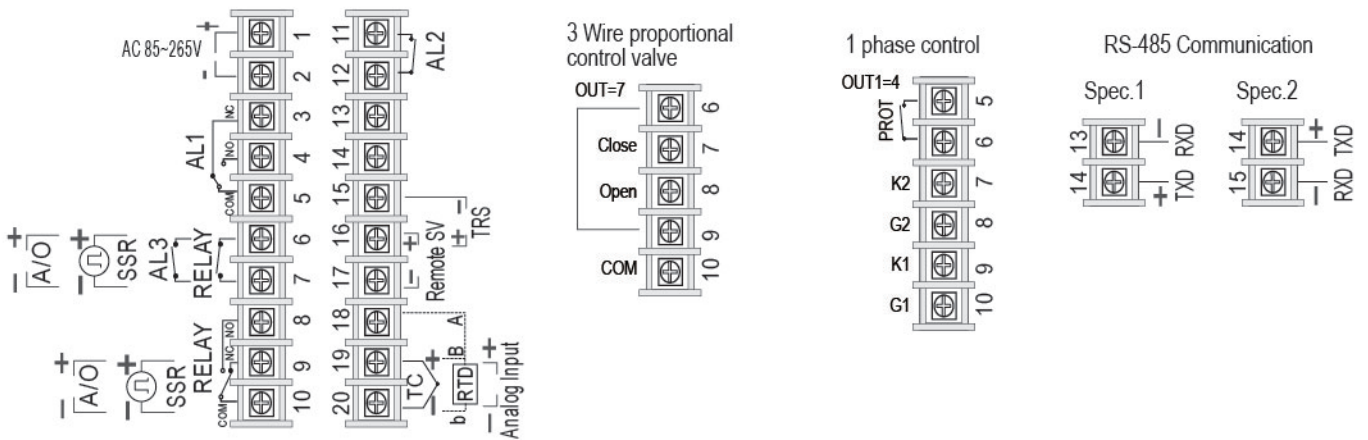
TYPE	K	J	R	S	B	E	N	T	W	PL	U	L	PT-100 $\Omega$	AN(-1999~9999℃)
1	0.0~200.0℃	0.0~200.0℃	0~1600℃	0~1600℃	0~1820℃	0~800℃	0~1200℃	-199.9~400.0℃	0~2000℃	0~1300℃	-199.9~600.0℃	0~400℃	-199.9~600.0℃	-10~10mV
2	0.0~400.0℃	0.0~400.0℃	0~1769℃	0~1769℃		0~1000℃	0~1300℃	-199.9~200.0℃	0~2320℃	0~1390℃	-199.9~200.0℃	0~800℃	-199.9~400.0℃	0~10mV*2
3	0~600℃	0~600℃						-199.9~350.0℃			-199.9~400.0℃		-199.9~200.0℃	0~10mV*5
4	0~800℃	0~800℃											0~200℃	0~50mV / 0~20mA / 0~5V
5	0~1000℃	0~1000℃											0~400℃	10~50mV / 4~20mA / 1~5V
6	0~1200℃	0~1200℃											0~600℃	

# WIRING CONNECTION

## ●TB-400 (48x48mm)



## ●TB-600 (48x96mm)/ TB-800 (96x48mm)/ TB-900 (96x96mm)



## ●TB-700 (72x72mm)

